



Regional Roadway System Visioning Study Update

Kristi Sebastian, P.E., PTOE
Transportation Department
Physical Development Division

JoNette Kuhnau, P.E., PTOE
Kimley-Horn and Associates

1

Overview



- Study Background
- Study Process
- Draft Recommendations
- Next Steps
- Questions/Comments

2

Study Area *Dakota* COUNTY

- Northeast Eagan
- Northwest Inver Grove Heights
- Mendota Heights
- Sunfish Lake

LEGEND

- Study Area
- Planned Development Intensity
- Improvement Under Construction

3

Study Background *Dakota* COUNTY

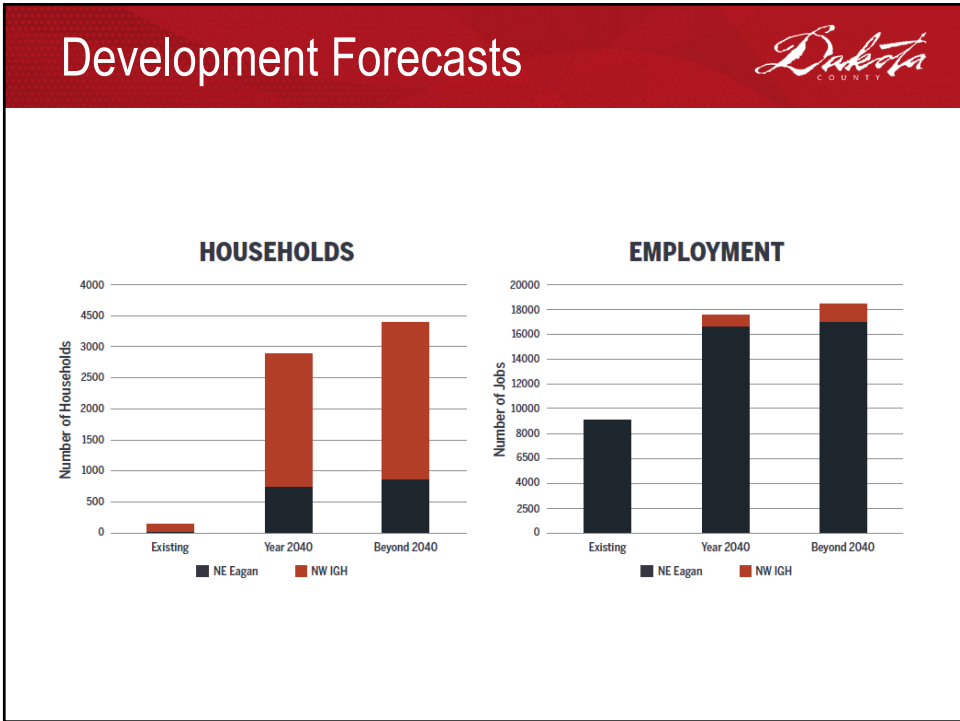
- Regional Roadway System Visioning Study (RRSVS) completed in 2010
- Recommended transportation improvements to meet long-term needs based on forecast growth in the area
- Since 2010:
 - Development has occurred with less intensity than forecast
 - Transportation improvements have been completed
 - City comprehensive plans updated

4

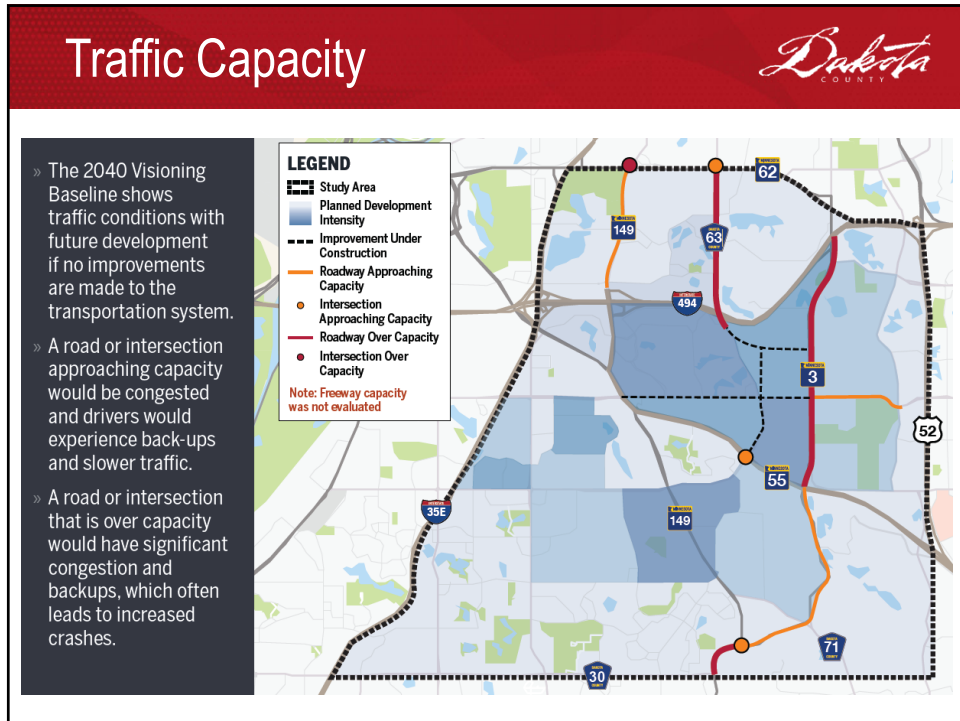
Study Process *Dakota* COUNTY

- Transportation needs identified based on:
 - Traffic Capacity
 - Traffic Safety
 - Roadway Network/Connectivity
 - Environmental and Property Impacts

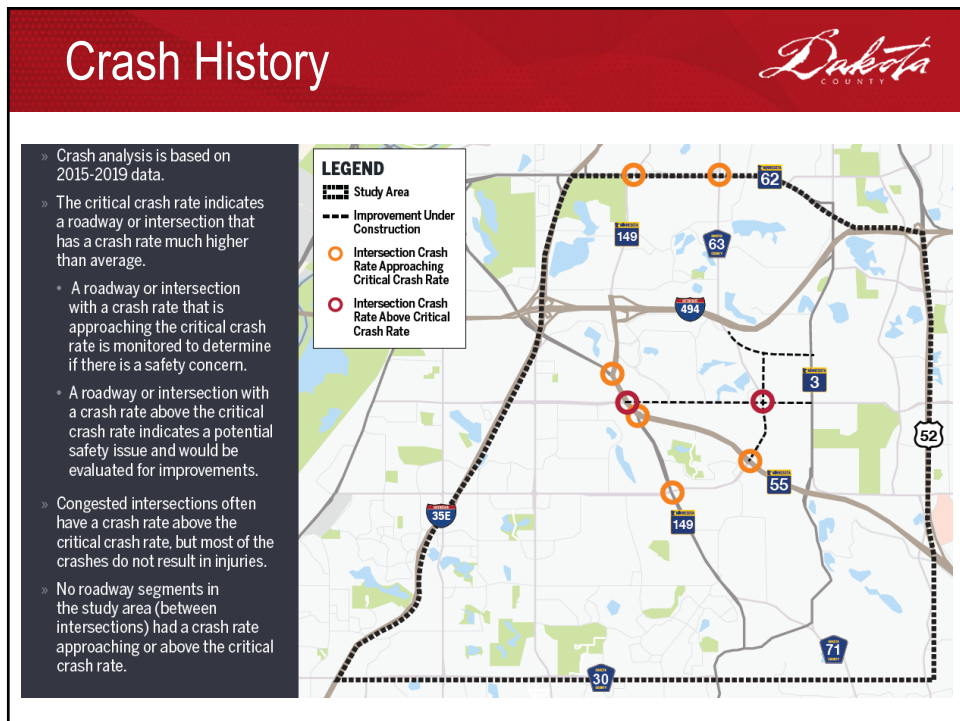
5



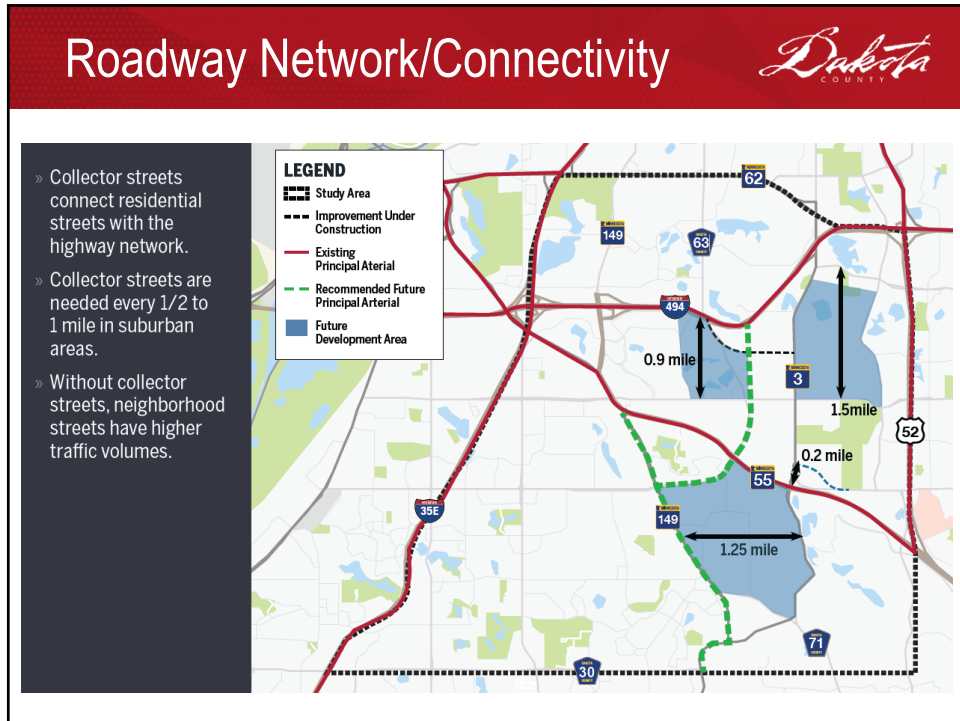
6



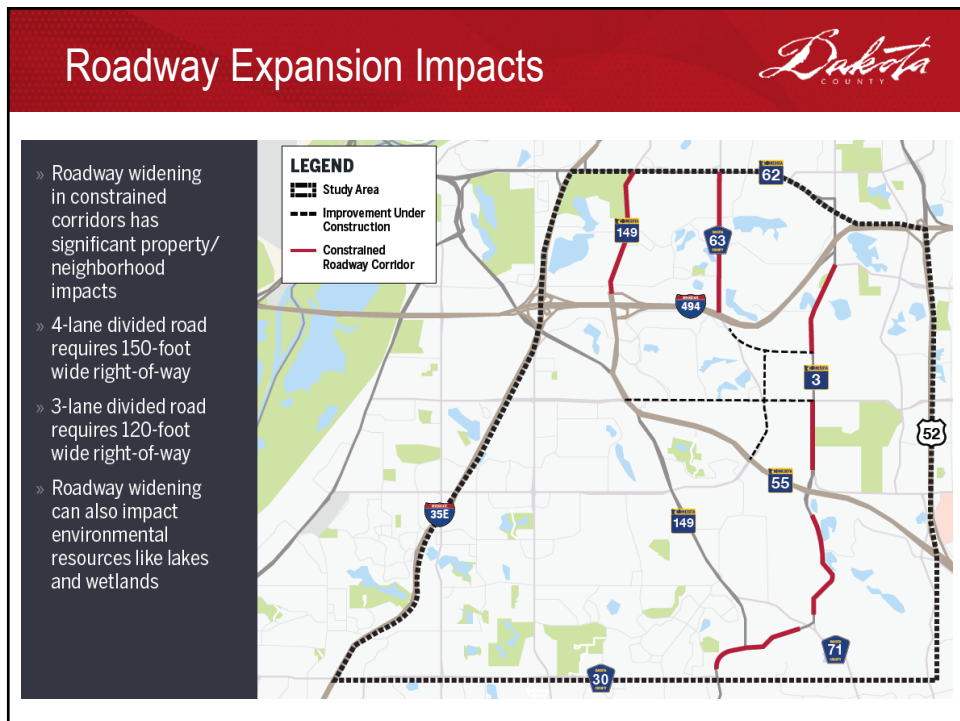
7



8



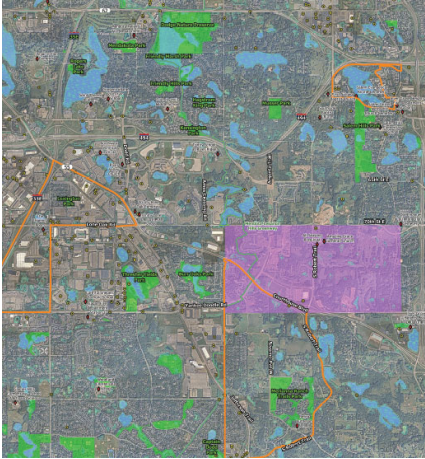
9



10

Environmental Resources *Dakota* COUNTY

- Wetlands
- Endangered species
- Historic properties
- Sites in MPCA inventory
- Parks
- Environmental justice
- Community assets (schools, parks, libraries, etc)



11

Process to Develop Transportation Improvements *Dakota* COUNTY

Address capacity, safety, or connectivity need

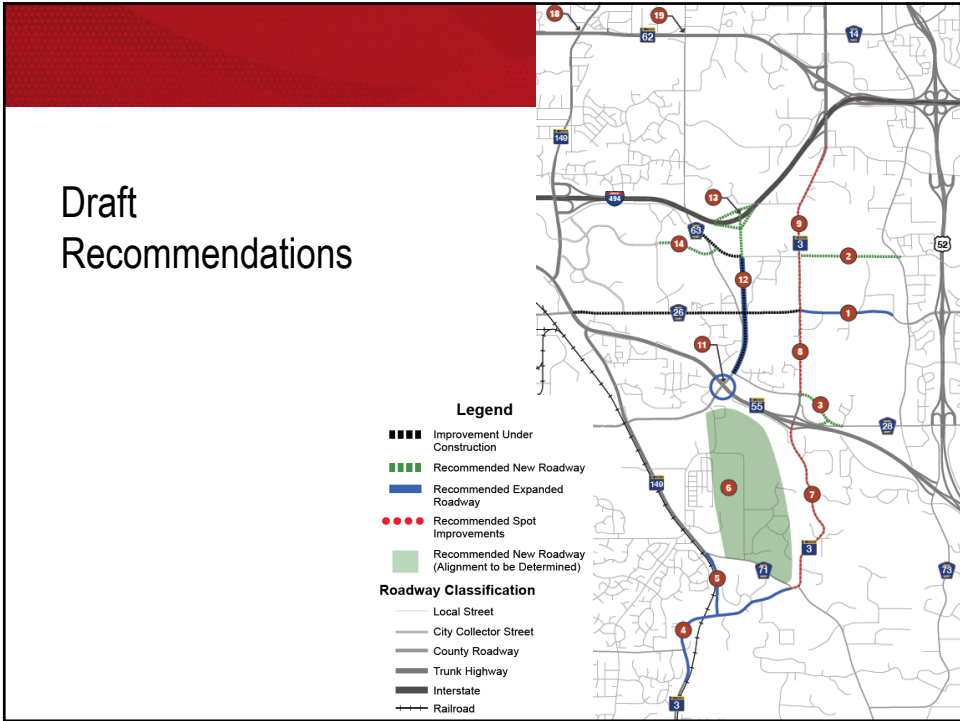
Type of improvements considered:

- » Roadway expansion (adding through lanes)
- » New roadways
- » Interchange expansion
- » New interchange
- » Intersection improvements
- » Adding turn lanes
- » Access management

Focus corridors:


- » TH 3 (Robert Trail)
- » TH 149 (Dodd Road/Jefferson Trail)
- » TH 55
- » CR 26 (Lone Oak Rd/70th Street)
- » CR 28 (Yankee Doodle Road/80th Street)
- » CR 63 (Argenta Trail/Delaware Avenue)

12



13

Implementation



- Improvement timing driven by development and rate of traffic growth
- Design of each improvement determined during engineering phase
- Changes in interstate access require significant analysis

14

Next Steps



- Gather public and agency input on draft recommendations
 - Virtual open house May 31-June 24
 - In-person open house June 1, 5-7pm at Veterans Memorial Community Center
- Finalize study recommendations

15



Questions?

16